

Office of Natural Resources and Environmental Policy and Planning (ONEP)

As part of the Ministry of Natural Resources and Environment, ONEP's mission is to develop environmental policies in order to strengthen economic growth, sustainable development and wellbeing. The mission includes developing and implementing instruments such as the Environmental Quality Management Plan, as well as the monitoring of and reporting on environmental impacts through Environmental Impact Assessments (EIA). ONEP further focuses on defining and recommending national climate change framework policies and implementation strategies, coordinating climate change actions in Thailand, as well as on providing guidance on UNFCCC negotiations, the Kyoto Protocol and other international climate change agreements.

Deutsche Gesellschaft für Internationale Zusammenarbeit (GIZ) GmbH

GIZ (German International Cooperation) is a federally owned enterprise that supports the German government in achieving its policy goals in international cooperation for sustainable development. GIZ also implements actions on behalf of other public and private sector clients both in Germany and overseas. These include national governments, the European Commission, the United Nations and other donor organizations. GIZ is active in more than 130 countries and employs over 17,000 staff worldwide.

Contact

Christoph Mairesse
christoph.mairesse@giz.de

Tim Mahler
tim.mahler@giz.de

Thomas Chrometzka
thomas.chrometzka@giz.de


Office of Natural Resources and Environmental Policy and Planning (ONEP)
npcccommittee@gmail.com

60/1 ONEP Building, 7th floor Soi Phibunwattana 7 Rama VI Rd,
Phayathai Bangkok 10400, Thailand
Tel: (+66) 2 298 6587-88, (+66) 2 265 6692
Fax (+66) 2 298 6589



Support to the Development and Implementation of the Thai Climate Change Policy



On behalf of:
 Federal Ministry for the Environment, Nature Conservation, Building and Nuclear Safety
of the Federal Republic of Germany

Background

The "Support to the Development and Implementation of the Thai Climate Change Policy" project is part of the International Climate Initiative (IKI), launched by the German Federal Ministry for the Environment, Nature Conservation, Building and Nuclear Safety (BMUB) on the basis of a decision adopted by the German Parliament. It is a continuation of the climate change policy collaboration between BMUB and the Thai Ministry for Natural Resources and the Environment (MoNRE) initiated in 2009. The project builds upon the results achieved by the "Development and Implementation of Climate Policy" project supporting Thailand in the elaboration of Thailand's Climate Change Master Plan as well as in the development of climate action plans in two pilot regions and municipalities.

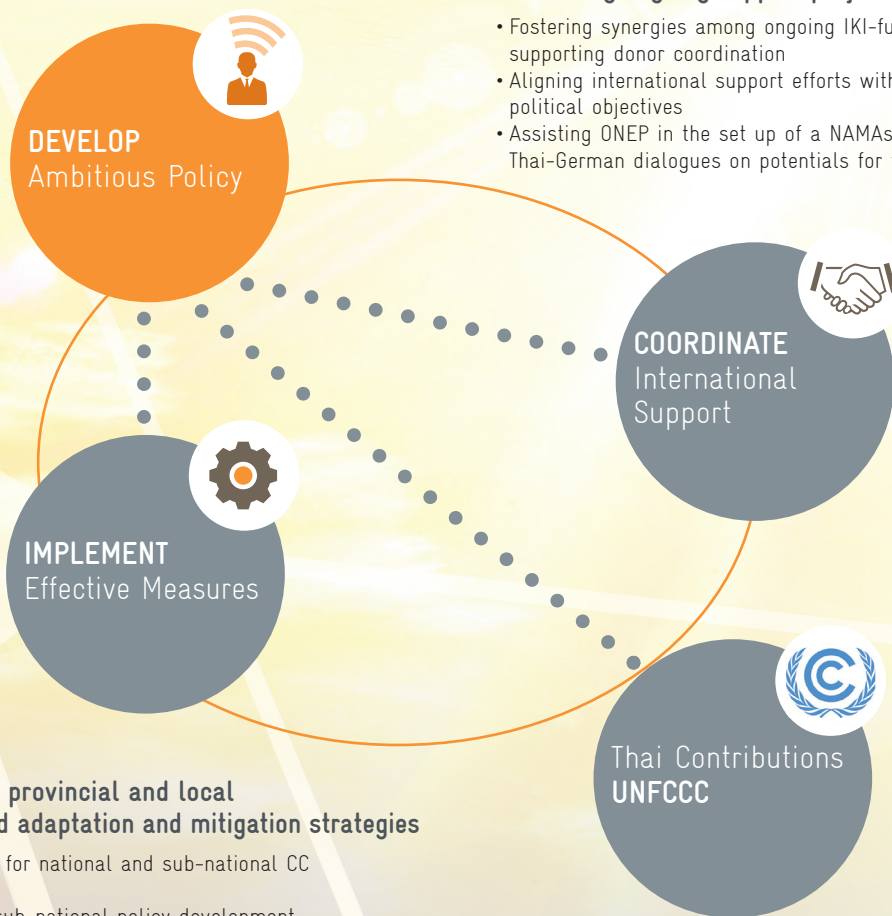
Connecting Climate Action

The project supports the Thai government in the development of an ambitious Climate Change Policy and its implementation on the national, provincial and local levels, thereby strengthening Thailand's contributions to the Conference of the Parties of the United Nations Framework Convention on Climate Change (UNFCCC COPs).

Launched in January 2014, the 3-year project aims to deepen the cooperation between MoNRE and BMUB. The Office of Natural Resources Environmental Policy and Planning (ONEP) under MoNRE and the Deutsche Gesellschaft für Internationale Zusammenarbeit (GIZ) GmbH, as well as selected regional and local authorities, jointly implement the project.

Connecting Climate Change and Energy Policies

- Supporting the development of the National Climate Change Action Plan with technical knowledge and trainings
- Deepening the dialogue between MoNRE and Ministry of Energy
- Facilitating knowledge exchanges between Thailand and Germany on Climate Change Policy and Energy Transition



Connecting national, provincial and local development-oriented adaptation and mitigation strategies

- Elaborating a guideline for national and sub-national CC Policy development
- Providing trainings on sub-national policy development (16 Provinces and 32 municipalities)
- Assessing renewable energies potentials in two pilot provinces
- Supporting the development of NAMAs

Connecting ongoing support projects

- Fostering synergies among ongoing IKI-funded projects and supporting donor coordination
- Aligning international support efforts with Thailand's political objectives
- Assisting ONEP in the set up of a NAMAs Focal Point furthering Thai-German dialogues on potentials for future cooperation

Connecting MoNRE and BMUB in regular political dialogues

- Providing trainings on COP-related topics such as Nationally Appropriate Mitigation Actions (NAMAs) and Intended Nationally Determined Contributions (INDCs) and negotiation techniques
- Deepening the ongoing dialogue between Thailand and Germany on Low Carbon and Climate Change Policy Development